



PLACE MATTERS

Design Lab 8 ♦ Oakland, California Logic Model Presentation

Martin Luther King Jr. County



King County

Vision for equity in King County

What if all residents of King County had the same opportunities regardless of race, ethnicity, gender, immigration status, sexual orientation or disability?

To receive the same quality education, the same access to basic health care, the same opportunities to work for a living wage, the same access to affordable housing, the same ability to live in safe neighborhoods, and the same opportunity to enjoy the natural environment.

A new, better and very different King County would emerge.

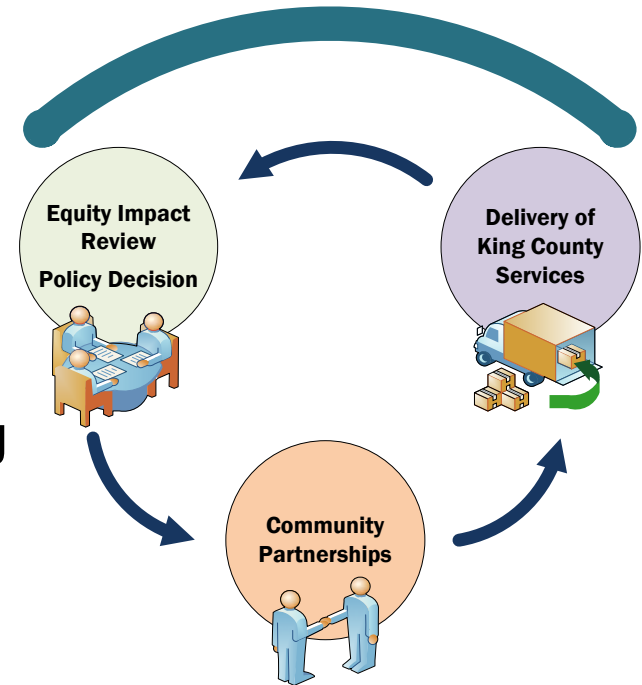
We can be the catalyst for this change.

-- Executive Ron Sims 2008 Budget Speech

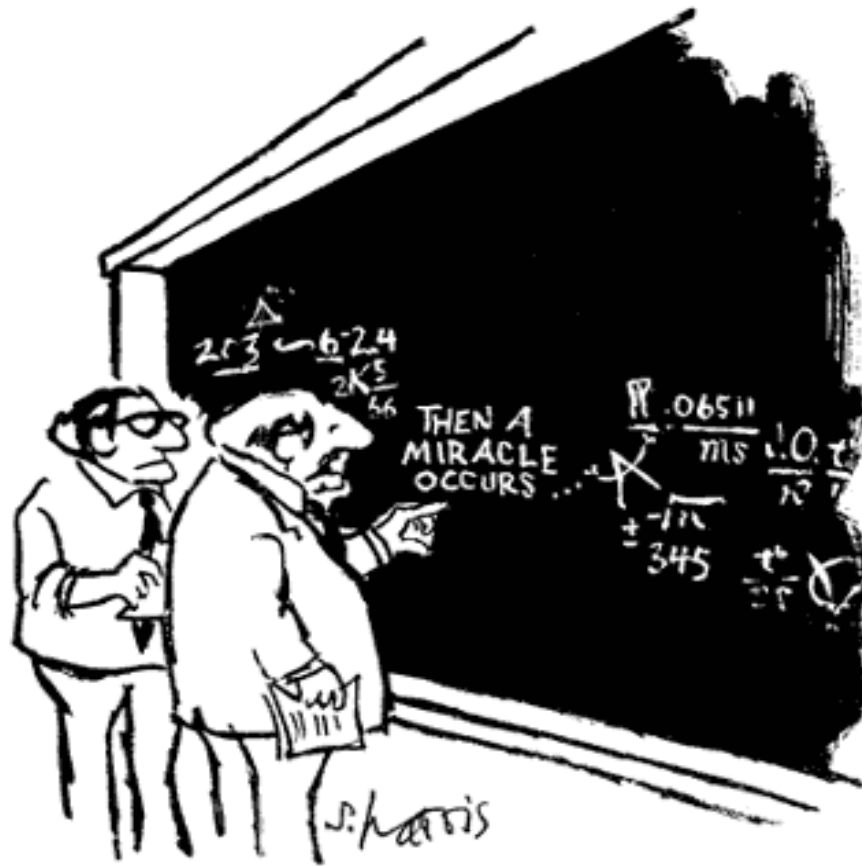
Correcting Inequities and Promoting Equal Opportunity for all Residents

King County will make equity and social justice central to its work by focusing on three levels of action:

1. Policy development and decision making
2. Delivery of county services
3. Community partnerships



Benefits and Challenges



"I think you should be more explicit here in step two."

Benefits and Challenges of Logic Model Development

- **Process:** Listed all of the activities ongoing throughout the county related to equity and social justice
- **Learning:** Need to coordinate activities and develop a focal point; eliminate layers to implementation
- **Implementation:** The logic model shows interrelationships among the activities and gives a “checklist” for moving forward

How the Logic Model will Change Social Determinants

- **Flow:** Worked from the impacts back to the resources needed
- **Elements:**
 - Key resources are: money, leadership, and staff
 - Key outcomes: empowered communities, reduction in chronic homelessness, and improved graduation rates

How the Logic Model will Change Social Determinants

- ***Impacts:***
 - Equity and social justice incorporated (institutionalized) into daily practice of the county
 - Integration of other initiatives:
 - Children's access to health care
 - All individuals and families have access to safe and affordable housing
 - Residents have access to family wage jobs
 - Children enter school ready to learn
 - Residents have access to affordable and healthy foods

Elements of the Logic Model

- Community dialogues and engagement
- Interdepartmental Team for accountability and oversight
- Equity Impact Review tool to guide decision-making
- Strengthen existing initiatives through equity focus

Equity Impact Review Tool

- Implementation
 - Public Health
 - Other departments (e.g., transportation, natural resources)
 - Inter-departmental issues
- Training and technical support

Community Engagement

- Unnatural Causes:
Over 50 trained facilitators,
including county employees
and community members
- 100s of screenings (internal and
community)
- Youth engagement: Facilitators and
screenings



Organization

- County inter-departmental teams
 - Leadership
 - Operations cabinet
- Advisory group
 - Business, community and political leaders

Next Steps: Action and Implementation



- Form the Equity & Social Justice Initiative's Advisory Team
- Initiate strategic planning, informed by logic model
- Work with each King County department on implementing priority projects
- www.kingcounty.gov/equity